



# GAT MONTHLY MEMBERSHIP PROGRESS REPORT

Results as of: 3/31/2022

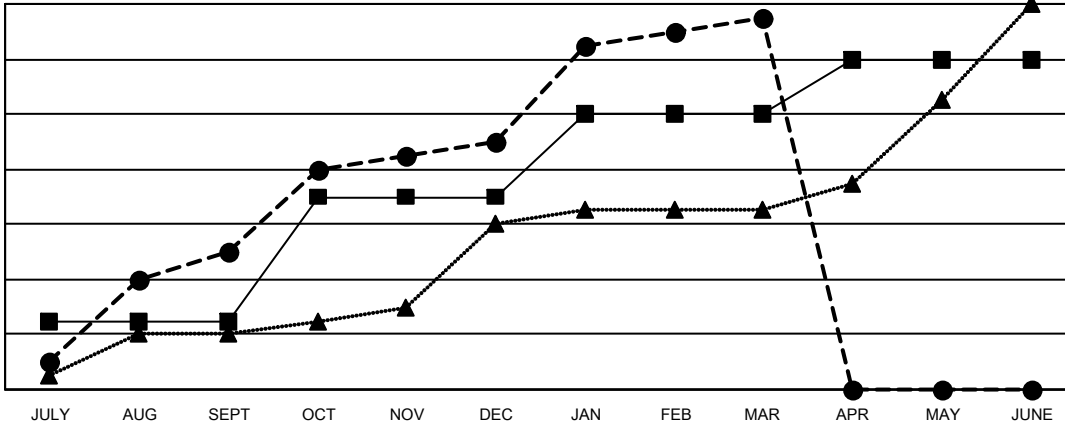
Multiple District 308

LOCATION: SINGAPORE

Clubs			
RESULTS FOR 2021-2022			
QUARTER	NEW CLUB GOAL	NEW CLUBS	DROPPED CLUBS
JULY/AUG/SEPT	5	10	3
OCT/NOV/DEC	9	8	3
JAN/FEB/MAR	6	9	4
APR/MAY/JUNE	4	0	0

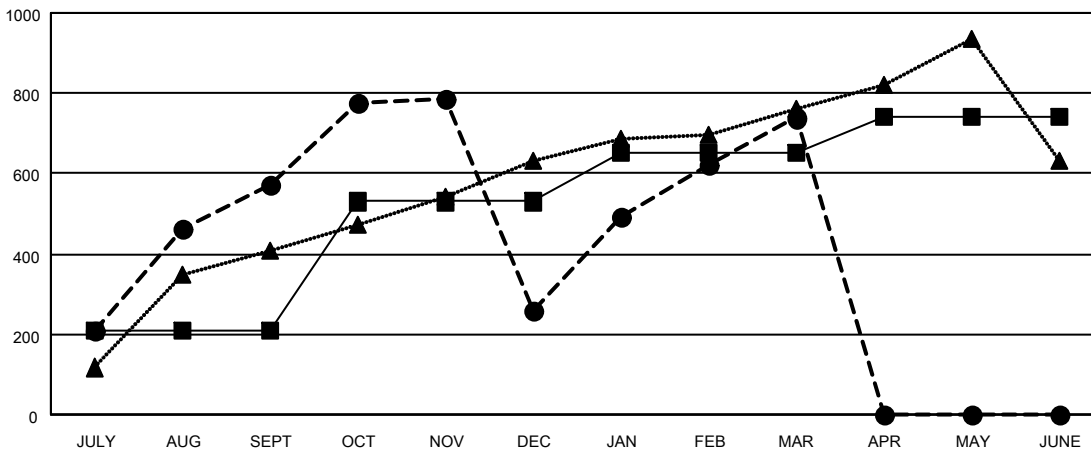
Members			
RESULTS FOR 2021-2022			
QUARTER	MEMBER GROWTH NET GOAL	MEMBER GROWTH ACTUAL	DROPPED MEMBERS ACTUAL (including transfers)
JULY/AUG/SEPT	210	856	252
OCT/NOV/DEC	320	487	782
JAN/FEB/MAR	120	640	111
APR/MAY/JUNE	90	0	0

GOALS AND ACTUAL NEW CLUBS CUMULATIVE



- CURRENT YEAR GOALS FOR NEW CLUBS
- CURRENT YEAR ACTUAL NEW CLUBS
- ▲- LAST YEAR ACTUAL NEW CLUBS

GOALS AND ACTUAL MEMBERS CUMULATIVE



- MEMBER GROWTH NET GOAL
- MEMBER GROWTH ACTUAL
- ▲- LAST YEAR MEMBERSHIP ACTUAL

DROPPED CLUBS: 10	
<b>DROPPED MEMBERS</b>	
DECEASED	33
CLUB CANCELLED	102
OTHER	1,012
<b>TOTAL</b>	<b>1,147</b>

276 CLUBS OF 473 ADDED 1 OR MORE NEW MEMBERS

[CLICK HERE FOR CUMULATIVE MEMBERSHIP DATA](#)

GENDER DISTRIBUTION	
MALE	8,974 (66.09%)
FEMALE	4,595 (33.84%)
NON BINARY	0 (0.00%)
PREFER NOT TO ANSWER	9 (0.07%)
<b>TOTAL FAMILY UNIT MEMBERS</b>	<b>1,828</b>
<b>FAMILY MEMBERS PAYING HALF DUES</b>	<b>1,040</b>